

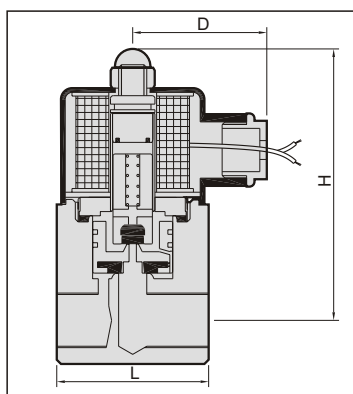
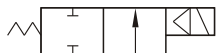
# MUAO series Normally closed

## SOLENOID VALVE



Model: MUAO-8, 10, 15

Available fluid: Oil, air.



### Specification:

- 2-WAY normally closed solenoid valve.
- Type MUAO withsand high temperature.
- Standard voltage: AC 110V/220V (50/60 Hz).
- Voltage is with  $\pm 10\%$  differential.
- Simple construction & easy assembly.
- Other voltage of AC/DC available when required.
- Installation: Mountable in leave position only. (Prohibition in vertical position).
- Port thread BSP, NPT, are also available.

### Not for fluid of:

- Liquid when heat, solid when cool.
- Corrosive fluid.
- Viscosity over 20 cst.
- Temperature over 80 °C.

### Caution:

- Pipes must be washed neat and clean before fitted.
- A Y-STRAINER has to be installed in the front of solenoid valve, that is best for long life.

### Material:

Parts name	Material
Body	Brass / Bronze
Bonnet nut	Brass / Bronze
Coil	Special copper wire
Piston	Special copper with O ring
Main valve	NBR
Needle	Special st. steel
Fixed steel	Special st. steel

Model (order code)	Connection pipe size	Cv	Orifice (mm)	Fluid temp	Max. operating pressure diff. kgf/cm <sup>2</sup>						L (mm)	H (mm)	D (mm)	Weight (kg)
					Steam	Water	Air	Light oil	Gas	Vacuum				
MUAO-8	PT 1/4"	2.5	10	-5°C	-	-	0.5~15	0.5~15	-	-	49	110	48	1.1
MUAO-10	PT 3/8"	2.5	10	?	-	-	0.5~15	0.5~15	-	-	49	110	48	1.1
MUAO-15	PT 1/2"	2.5	10	80°C	-	-	0.5~15	0.5~15	-	-	49	110	48	1.1

※The pressure ratings indicated above are based on AC110V/220V. The maximum pressure may vary in case on DC/AC24V.  
Special order: AC380V, 415V, 440V.